



# WHAT IS THE CONSORTIUM FOR MEDICAL MARIJUANA CLINICAL OUTCOMES RESEARCH?

Established by Florida in June 2019, the Consortium is a state-funded initiative that conducts, disseminates, and supports rigorous scientific research on the clinical outcomes of medical marijuana use.

Comprised of eleven universities across the state and housed at the University of Florida, the Consortium works to contribute to the understanding of medical marijuana use on health conditions and symptoms.

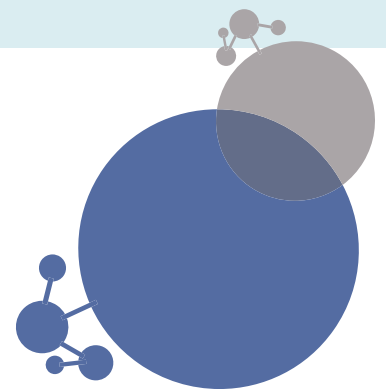
The Consortium fulfills its charge through a program focused on five pillars: a grants program, a unique research data repository known as the MEDical Marijuana clinical Outcomes Repository (MEMORY), a clinical research core, an evidence core, and an outreach program.

## CONSORTIUM MEMBER UNIVERSITIES

- Florida Atlantic University
- Florida A&M University
- Florida Gulf Coast University
- Florida International University
- Florida Memorial University
- Florida State University
- Nova Southeastern University
- University of South Florida
- University of Central Florida
- University of Florida
- University of Miami



**Support,  
conduct,  
and disseminate  
research on  
clinical outcomes  
of medical  
marijuana use**



# RESOURCES

For researchers, practitioners, patients, and industry collaborators



## Grants Program

Researchers at Consortium member institutions are eligible to apply for funding through the annual grants program. [mmjoutcomes.org/programs/research](http://mmjoutcomes.org/programs/research)



## MEMORY

Researchers at Consortium member institutions may request access to this data bank to facilitate safety and effectiveness studies pertinent to medical marijuana use for qualifying medical conditions. [mmjoutcomes.org/memory](http://mmjoutcomes.org/memory)



## M³ Survey Data

Researchers at Consortium member institutions interested in analyzing patient-centered survey data may request access to the Medical Marijuana & Me study data for writing papers, abstracts, or others. [mmjoutcomes.org/m3study](http://mmjoutcomes.org/m3study)



## CCORC

Attend the annual Cannabis Clinical Outcomes Research Conference, connecting researchers, physicians, and medical marijuana industry leaders. [ccorc.mmjoutcomes.org](http://ccorc.mmjoutcomes.org)



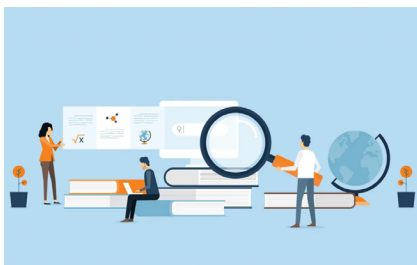
## Info Sheets

Learn more about medical marijuana and its use for different conditions through our info sheets, including questions to ask your healthcare provider. [mmjoutcomes.org/infosheets](http://mmjoutcomes.org/infosheets)



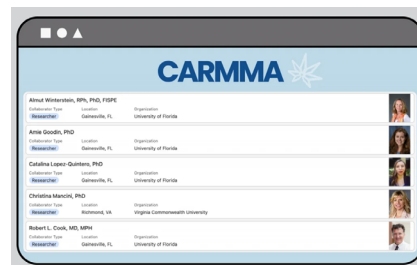
## Evidence in Context

A journal series aimed at clarifying and providing a clear translation of research findings for future or current implications for clinical practice. [mmjoutcomes.org/evidence/evidence-in-context](http://mmjoutcomes.org/evidence/evidence-in-context)



## Contact Registry


Medical marijuana users can join the contact registry to learn about current and future opportunities to participate in research. [mmjoutcomes.org/get-involved/registry](http://mmjoutcomes.org/get-involved/registry)



## CARMMA Database

Connect with researchers, medical marijuana providers, and industry collaborators to further advance medical marijuana research. [mmjoutcomes.org/collaborate/carmma](http://mmjoutcomes.org/collaborate/carmma)

## CONTACT US

 (352) 273-6984

 [mmjoutcomes.org](http://mmjoutcomes.org)

 [mmj.outcomes@cop.ufl.edu](mailto:mmj.outcomes@cop.ufl.edu)



Consortium for  
Medical Marijuana  
Clinical Outcomes Research