

## A New Combined Cohort and Cross-Sectional Study of Medical Marijuana Users in Florida

Ruba Sajdeya,<sup>1</sup> Yan Wang,<sup>1</sup> Hannah J. Fichtel,<sup>1</sup> Gabe Spandau,<sup>2</sup> Sebastian Jugl,<sup>3</sup> Nichole E. Smolinski,<sup>3</sup> Amie J. Goodin,<sup>3</sup> Joshua D. Brown,<sup>3</sup> Almut G. Winterstein,<sup>3</sup> Robert L. Cook.<sup>1</sup>

1. Department of Epidemiology, College of Public Health and Health Professions and College of Medicine, University of Florida.
2. College of Agricultural and Life Sciences, Department of Agricultural Education and Communication, University of Florida
3. Center for Drug Evaluation and Safety (CoDES), Department of Pharmaceutical Outcomes & Policy, University of Florida.

### BACKGROUND

- Significant knowledge gaps regarding the effectiveness and safety profile of medical marijuana (MMJ) impose challenges for MMJ-certifying clinicians who make treatment recommendations.
- The Medical Marijuana & Me (M<sup>3</sup>) study is proposed to collect patient-centered data from Florida MMJ users.

### OBJECTIVES (FIGURE 1)

1. Quantify MMJ use persistence and identify reasons for discontinuation.
2. Describe outcome trajectories for primary reasons for MMJ use and determine factors associated with different trajectories among MMJ initiators.
3. Describe preferred MMJ use patterns, including consumption modes, dosing, and use frequency that patients report as "most effective," and identify characteristics associated with such use patterns.
4. Describe changes in products, consumption modes, and dosing over time.
5. Characterize adverse effects, including cannabis use disorder, and identify associated products and patient characteristics.
6. Track alcohol, tobacco, and other substance use among MMJ initiators.
7. Describe concurrent prescription medications use, and factors associated with changes in medications after initiating MMJ.
8. Identify concomitant medication use with potential drug-MMJ interactions risk.

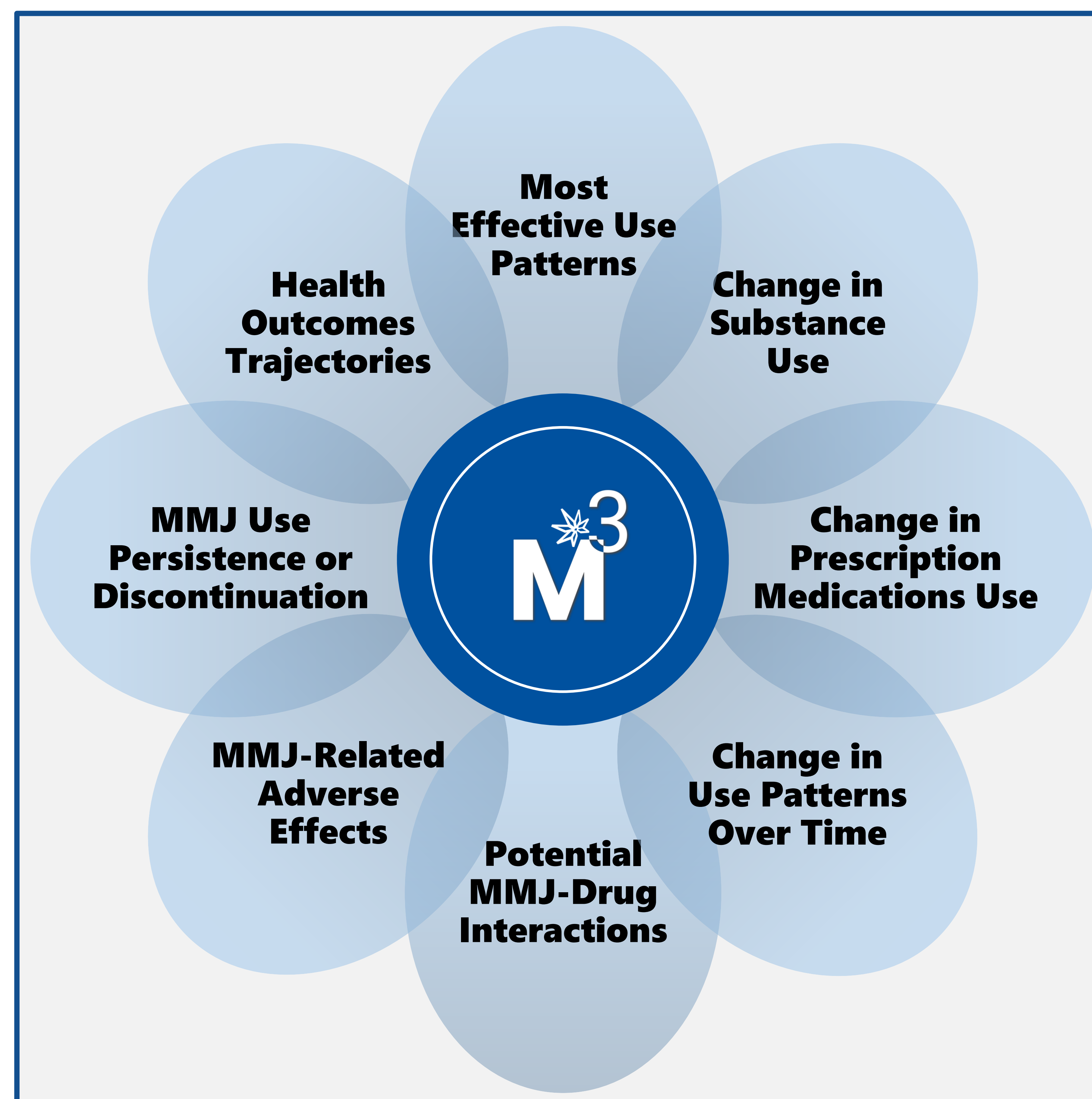


Figure 1. M<sup>3</sup> Study Objectives and Data Domains

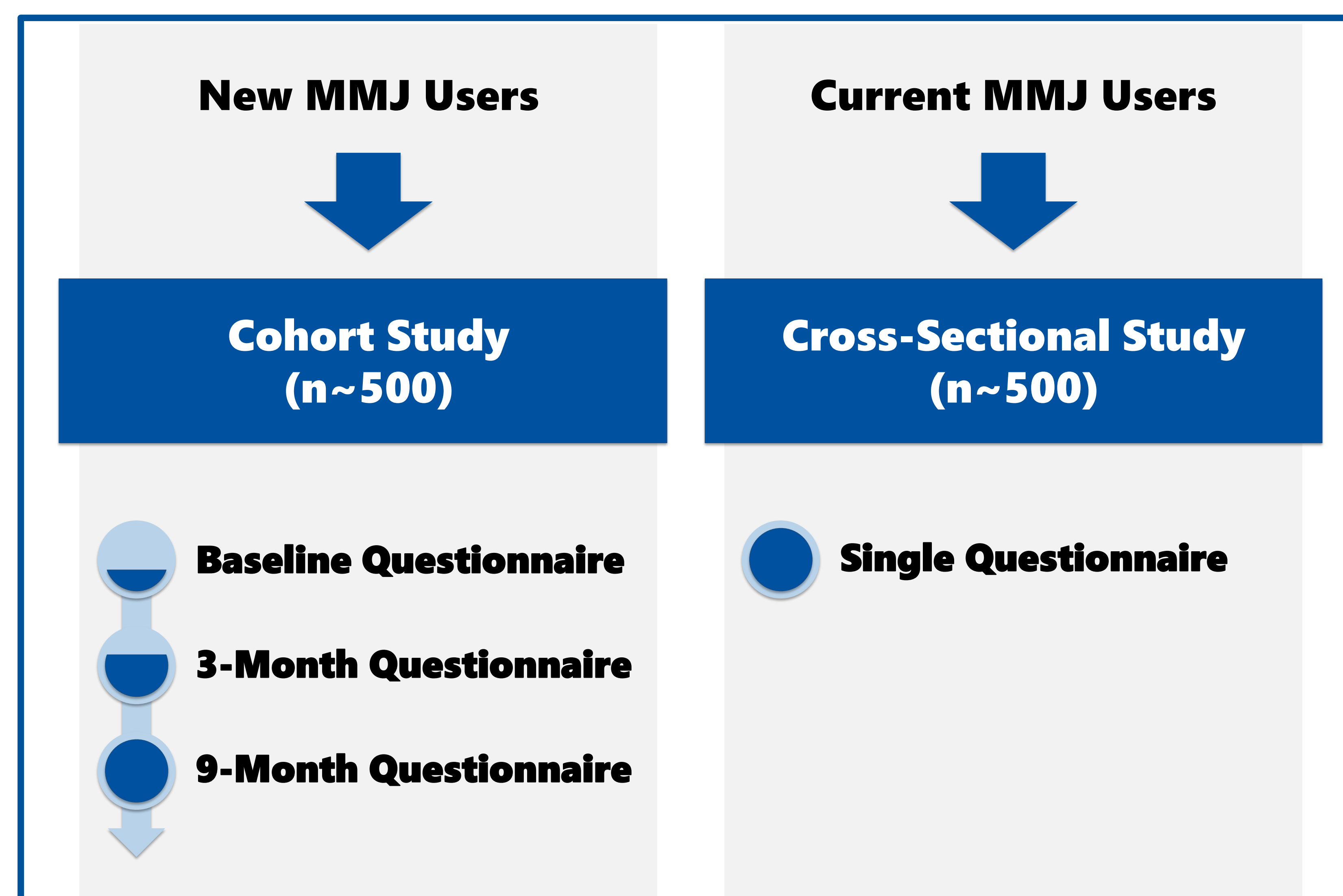


Figure 2. M<sup>3</sup> Combined Cohort/ Cross-Sectional Study Design



### PROTOCOL SUMMARY

- The M<sup>3</sup> databank will house (Figure 2):
  1. Data from a prospective cohort of MMJ initiators who complete three waves of survey questionnaires at enrollment, three months, and nine months after MMJ initiation.
  2. Data from a cross-sectional sample of current MMJ users who complete a single survey questionnaire.
- A multidisciplinary committee including researchers, physicians, pharmacists, patients, and dispensary personnel planned study protocol.
- We plan to recruit 1000 participants aged ≥ 18 years with ~50% new and ~50% current MMJ patients from clinics and dispensaries.
- Consented participants will be compensated with a gift card for each survey questionnaire completion.
- Survey domains include sociodemographic characteristics, physical and mental health, marijuana use history, reasons for MMJ use and discontinuation, MMJ products and use patterns, concurrent use of prescription medications and other substances, and side effects.
- We pilot-tested the survey questionnaires on 20 randomly selected participants from the Marijuana Center Contact Registry.
- We established an application process for researchers who would like to use M<sup>3</sup> data to facilitate sharing and analysis of deidentified M<sup>3</sup> data .
- Linkages with other databases are planned as well.
- Enrollment begins in May 2022.

### CONCLUSION

The M<sup>3</sup> databank will provide data to investigators affiliated with the Consortium to enhance research to inform policy, clinical practice, and improvements in patient outcomes.

### DISCLOSURES

This study is supported by the Consortium for Medical Marijuana Clinical Outcomes Research.



Scan QR code or visit study website at  
<https://mmjoutcomes.org/get-involved/m3/>  
✉ [m3cohort@php.ufl.edu](mailto:m3cohort@php.ufl.edu)