

### Introduction

- Medical Cannabis(MC) has been accessible to Floridians for the treatment of certain debilitating medical conditions since summer 2017.
- There is a knowledge gap regarding trends in the development of the Medical Marijuana (MMJ) program in Florida.
- **Objective: To describe trends in participation and product utilization within the Florida MC program.**

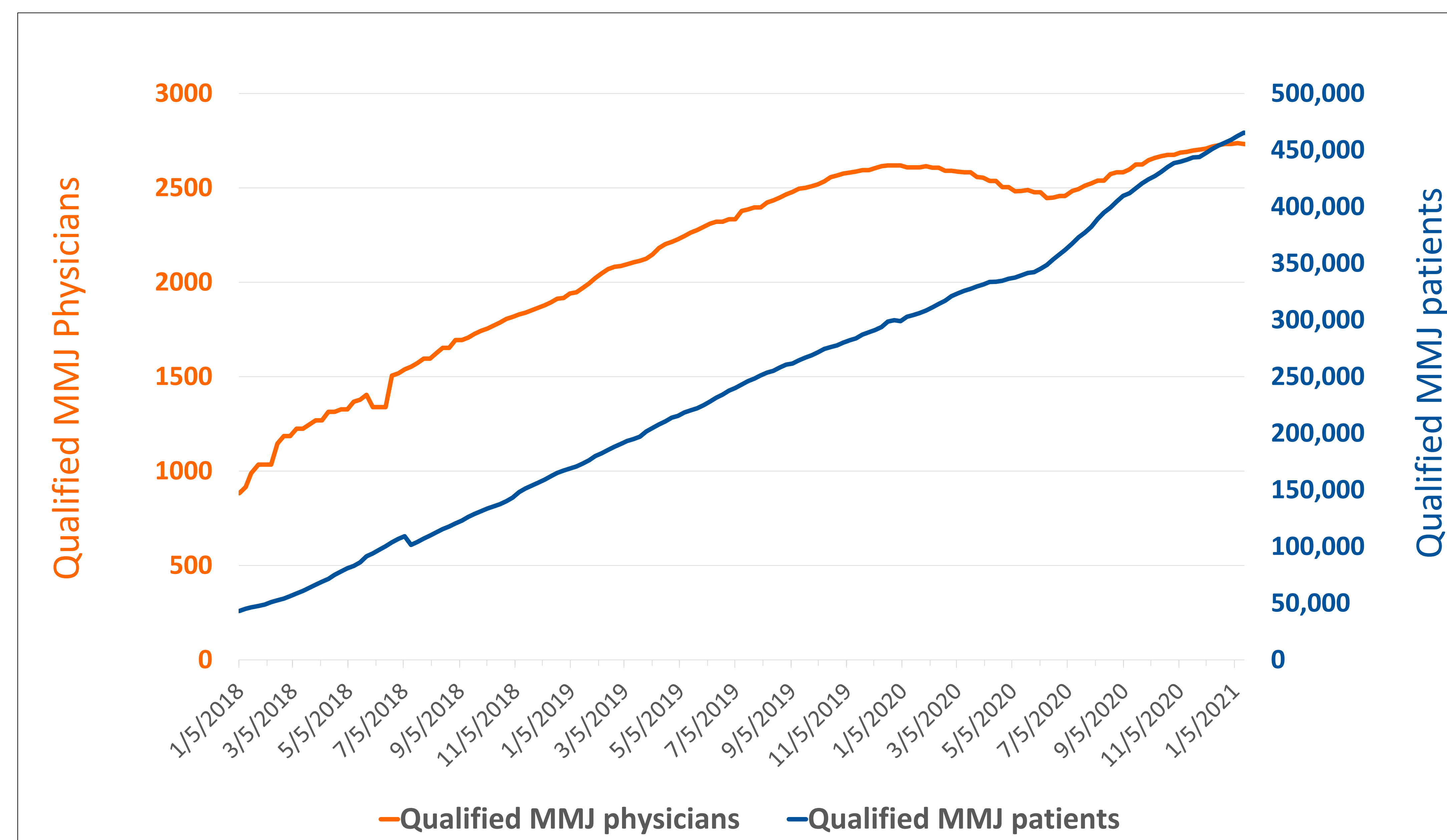
### Methods

- We analyzed the Florida Department of Health Office of Medical Marijuana Use (OMMU) weekly reports from January 2018 until January 2021.
- We defined medical cannabis as:
  - Medical marijuana(MMJ) (in mg THC).
  - Low-THC medical cannabis (in mg CBD).
- We excluded smokable products since they were not eligible until July 2019.
- We plotted trends, ratio of patients per qualified physician, dispensed MC per patient, and dispensed MC per physician.

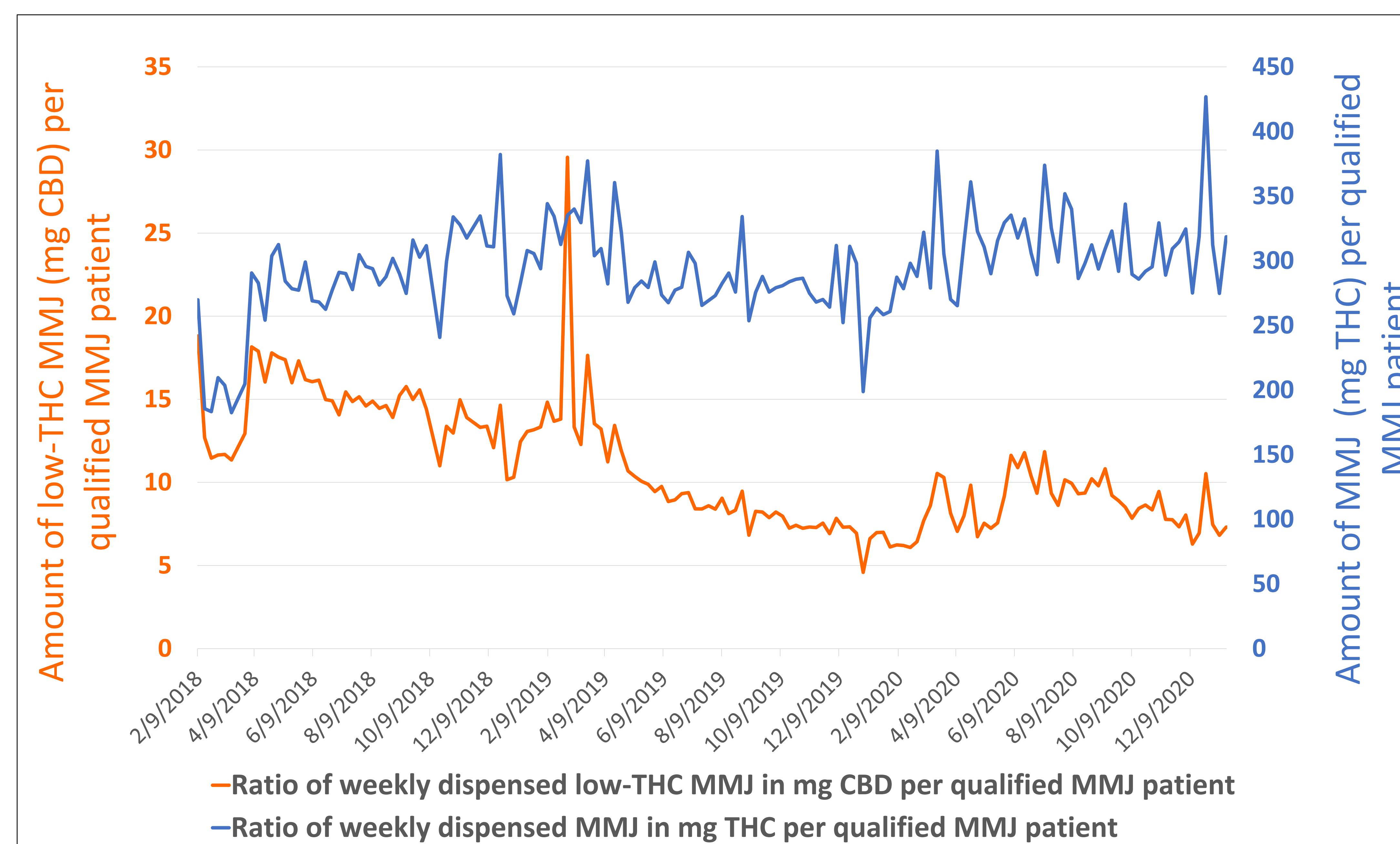
### Results

- From 2018 to 2021, the amount of MC patients and qualified MMJ physician increased 9.1-fold and 2.6-fold, respectively(Figure 1).
- Weekly dispensed MC increased in each category but was most pronounced in MMJ in mg THC.
- The amount of weekly dispensed low-THC in mg CBD per patient decreased by 61 % from 2018 to 2021, whereas the amount of MMJ in mg of THC per patient slightly increased.(Figure 2)
- The amount of dispensed MMJ in mg THC per qualified physician increased 5.5-fold from 2018 to 2021 .

# The Growth of the Medical Marijuana program in Florida and the decreased utilization of low-THC cannabis products



**Figure 1: Total numbers of MMJ qualified patients and qualified MMJ physicians in Florida from February 2018 to January 2021**



**Figure 2: Ratio of weekly dispensed low-THC and MMJ per qualified patient in Florida from February 2018 to January 2021**

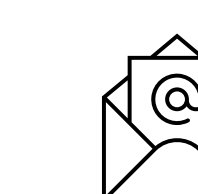
**While the medical marijuana program in Florida has exhibited a consistent growth in both qualified physicians and qualified patients from 2018 to 2021, the utilization of low-THC cannabis (in mg CBD) per patient declined more than half, whereas the MMJ utilization (in mg THC) per patients slightly increased.**

### Authors:

Sebastian Jugl<sup>1,2</sup>, Ruba Sajdeya<sup>3</sup>,  
Amie Goodin<sup>1,2</sup>, Robert L. Cook<sup>3</sup>,  
Joshua D. Brown<sup>1,2</sup>, Almut G. Winterstein<sup>1,2</sup>

### Affiliations:

1. Department of Pharmaceutical Outcomes and Policy, University of Florida
2. Center for Drug Evaluation & Safety (CoDES)
3. Department of Epidemiology, University of Florida



\* Contact corresponding author  
s.jugl@ufl.edu



Contact MMJ Outcomes  
mmj.outcomes@cop.ufl.edu  
<https://mmjoutcomes.org/>